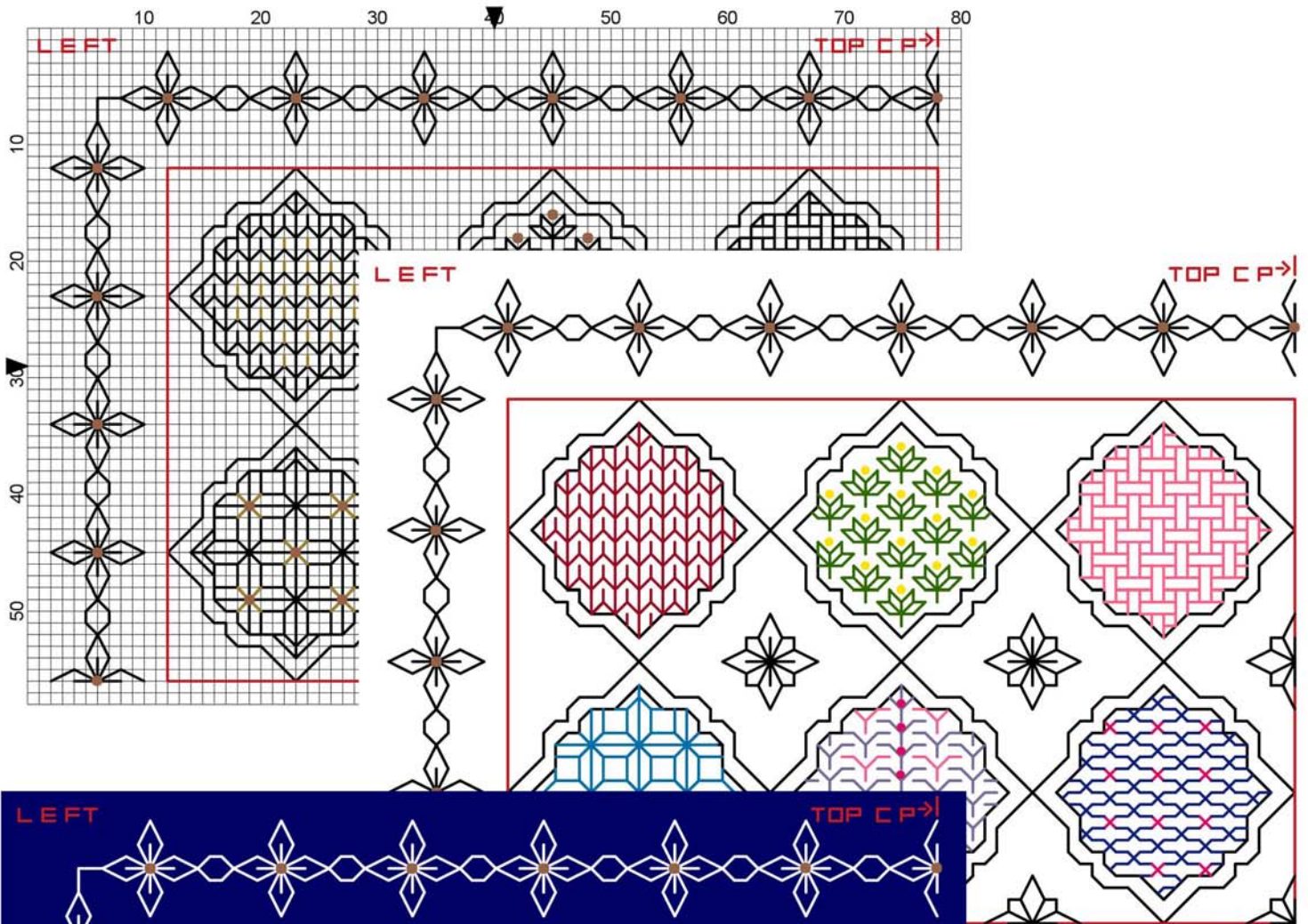


Box of Delights

Blackwork Journey - Designs by Elizabeth Almond

Block 1 Patterns 1 - 6

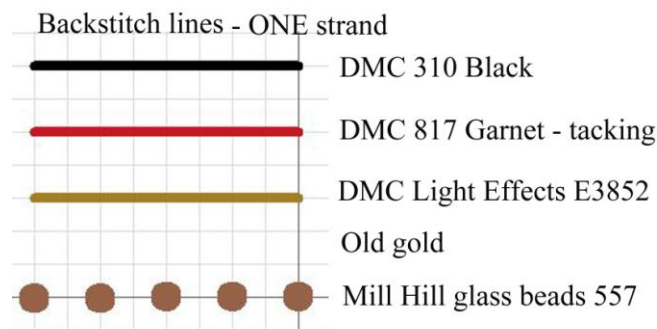


Block 1 - Patterns 1- 6

Grid Size: 80W x 58H

Design Area: 5.57" x 4.00" (78 x 56 stitches)

Block 1 Black and Gold



Threads:

DMC 310 Black, one skein

DMC 817 Coral red or sewing cotton for RED tacking lines

DMC Light Effects Metallic E3852 Dark Gold, one reel

Mill Hill Glass beads 557 Gold, one packet

Block 1 Navy

DMC White, one skein

DMC Light Effects Metallic E3852 Dark Gold, one reel or E168 Silver

DMC 817 Coral red or sewing cotton for RED tacking lines

Mill Hill Glass beads 557 Gold, one packet or 2022 Silver

Block 1 Coloured

DMC Threads – various colours as desired.

DMC 817 Coral red or sewing cotton for RED tacking lines

Follow the picture to help in colour selection.

Tapestry needle NO.24

Beading needle

Mount the fabric into the embroidery hoop if desired.

Stitches used:

Back stitch – worked in one strand of thread over two threads of fabric unless otherwise indicated on the chart

Cross stitch - worked in two strands of thread, over two threads.

Colonial knots - worked in two strands

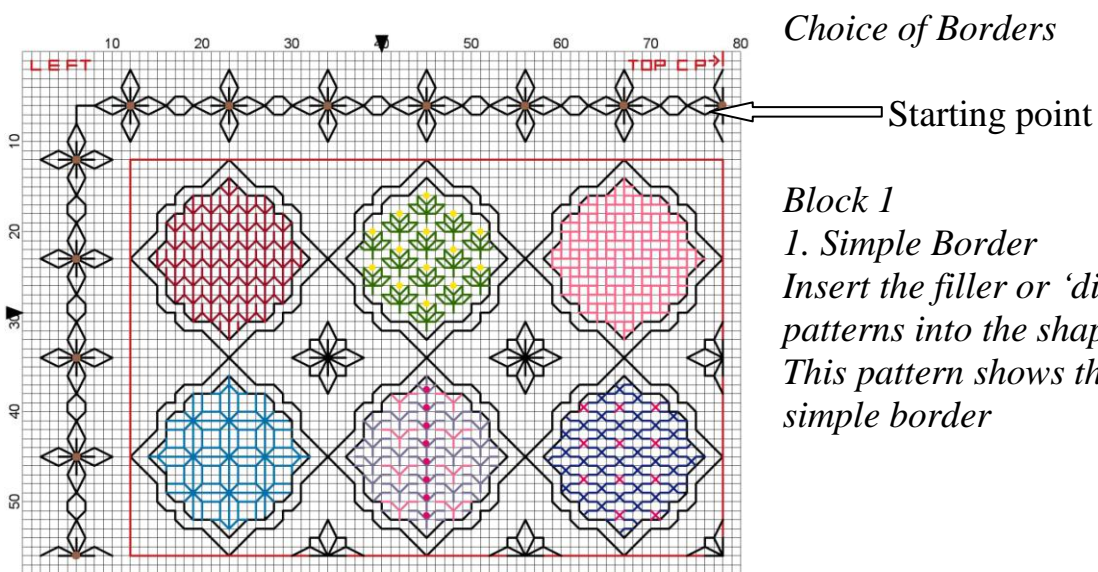
(See 'Introduction' for stitches (Page 7))

Preparation:

Oversew the raw edges of the fabric either by hand or machine to prevent fraying.

To find the centre point for pattern of 36 sweets, including the border:

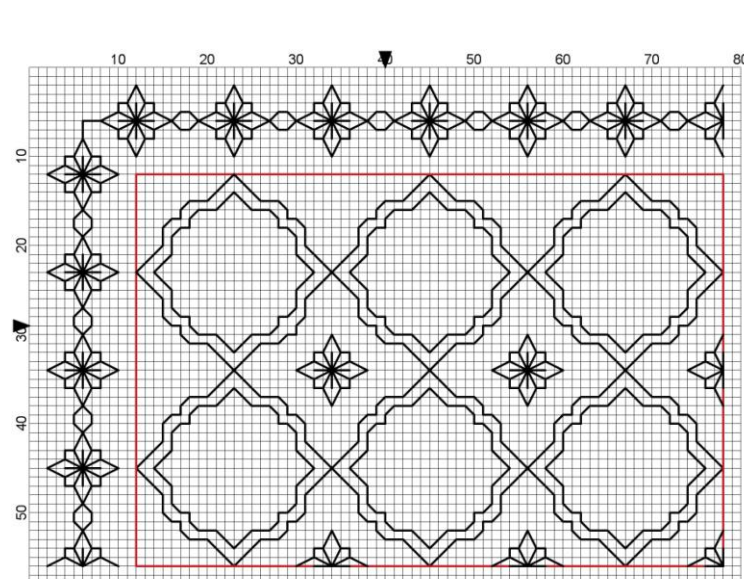
1. To find the centre point, fold the fabric in half in both directions and crease lightly. Tacking lines in red are shown on the chart. These are optional.
2. Count up from the centre point (CP) 78 stitches. This will bring you to the point of the flower on the top outside border.
3. Work the border to the left and the right of the centre line at the TOP of the chart. Choose either the simple border or the more intricate one shown below.
4. Insert the sweet outlines for Block 1 (Top left)



Choice of Borders

Block 1

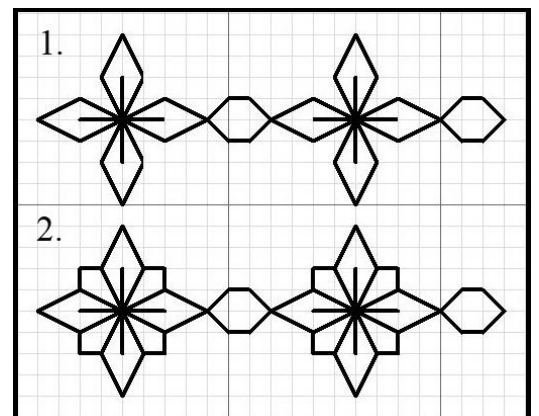
*1. Simple Border
Insert the filler or 'diaper' patterns into the shapes.
This pattern shows the simple border*

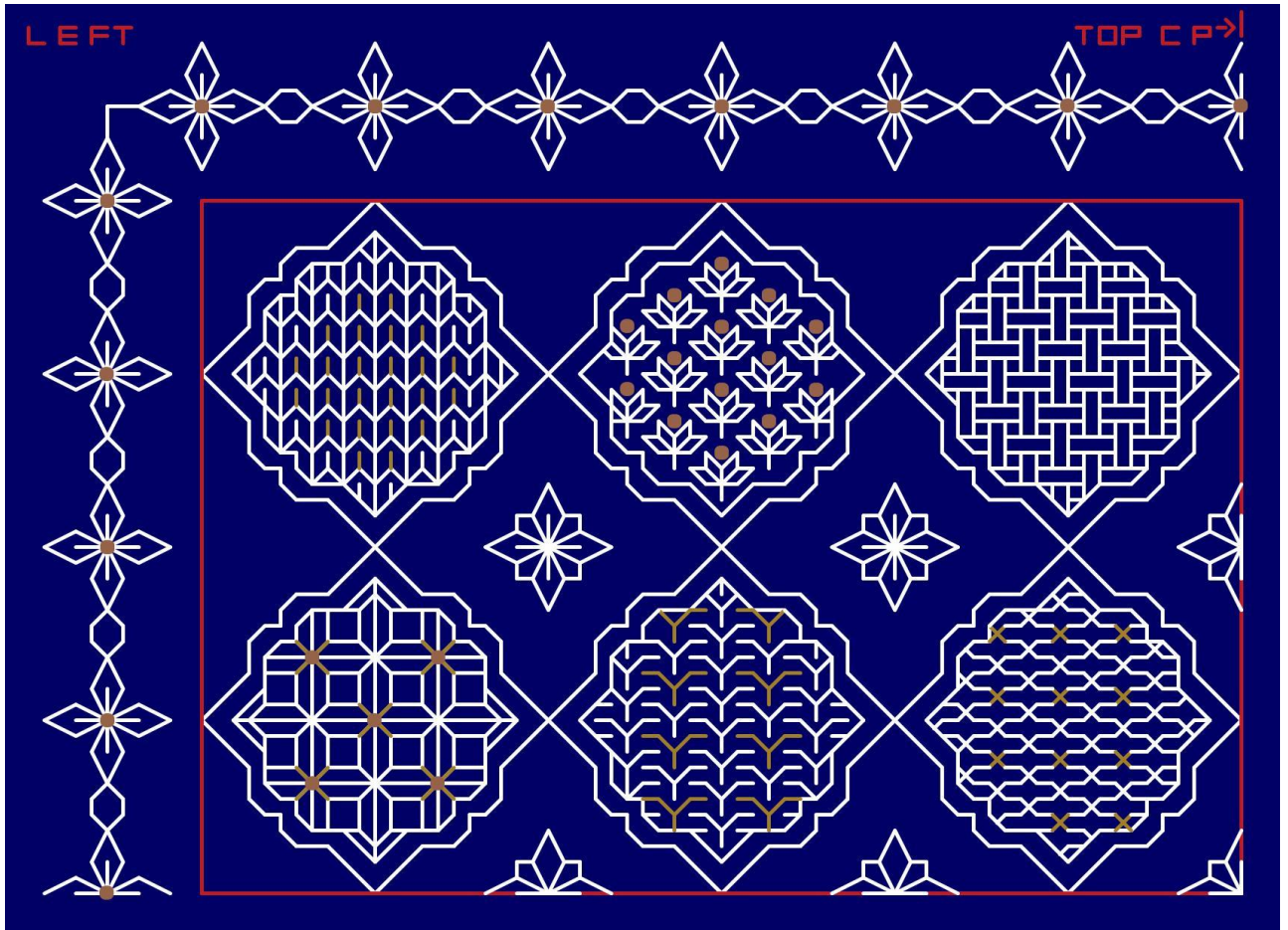


Block 1

*2. Alternative border
This design has an additional eight stitches added to the basic shape to create a more detailed design.*

Borders 1 and 2





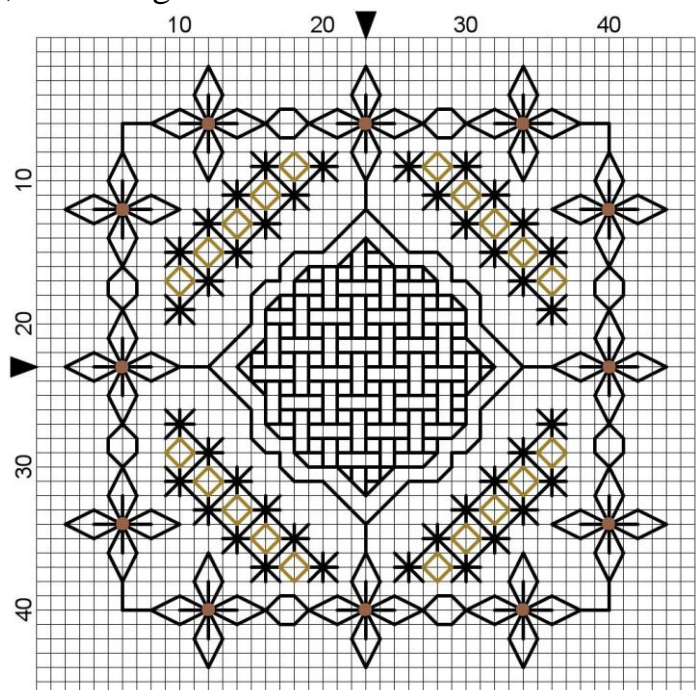
Block 1 Navy using Border1 - the simple design!

The gold metallic threads can be replaced by DMC E168 Silver and Mill Hill glass beads 2022 Silver in place of the gold beads.

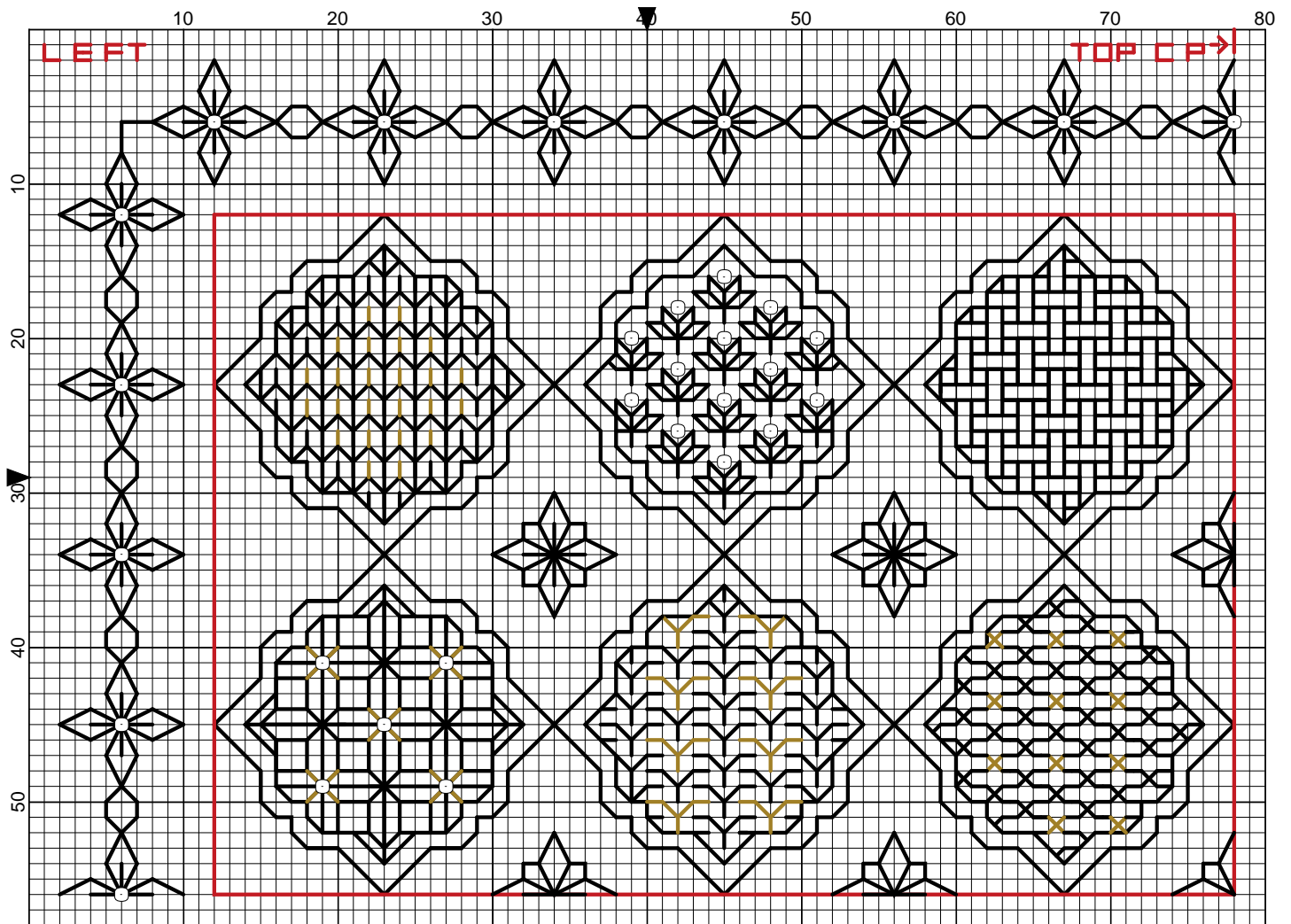
Use the chart for Block 1 black and gold when working this version.

This design is also suitable for black, emerald green or red fabric.

Single motif from Block 1 worked in black and gold.

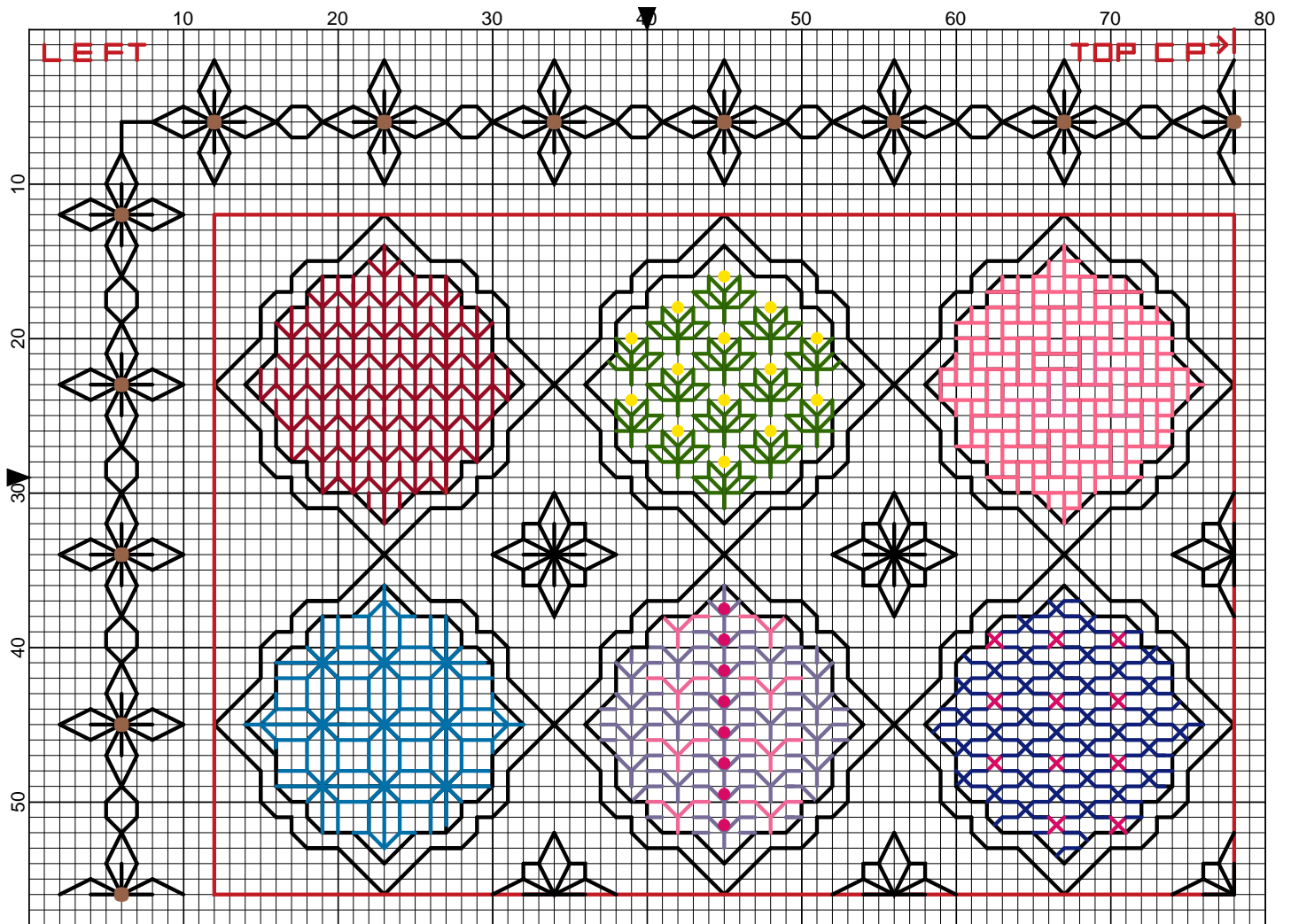


Block 1 Patterns 1 - 6 Black & Gold



Elizabeth Almond

Block 1 Patterns 1 - 6 Colour



Elizabeth Almond

Block 1 Colour Patterns 1 - 6

